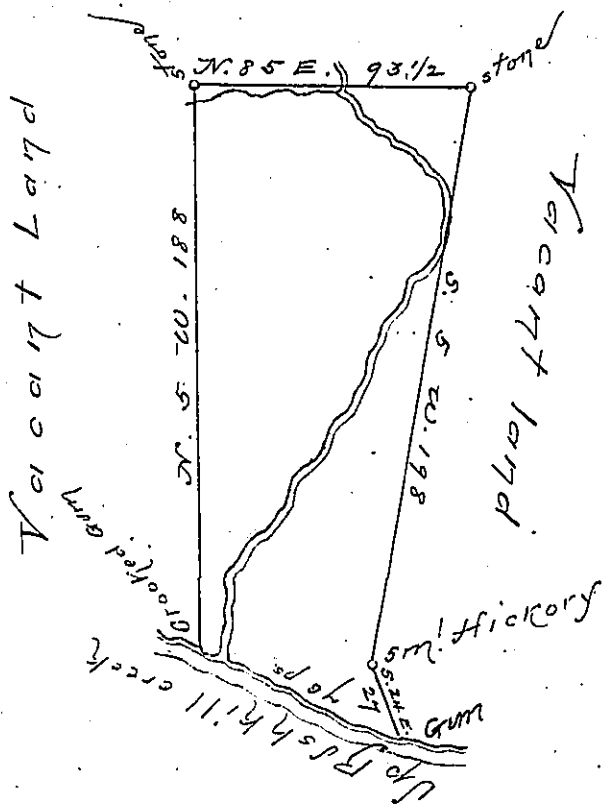


Lehman -
PIKE



The Bearing and distance
up big Bushkill are
 1. N. 85 W. 9
 2. N. 84 W. 42
 3. N. 73 W. 25
 76

By Virtue of an Application No 1723 dated
 the 30 July 1766 Surveyed the 10 December 1784
 to James Hynshaw the above described tract of
 land situate on the north side of big Bushkill
 creek about two miles from Gouzalles's mill in
 Delaware Township Northampton County
 containing Ninety Acres three quarters and
 the allowance of six P Cent &c.

To }
 Andrew Porter Esquire } Geo. Palmer
 Surveyor General }

IN TESTIMONY that the above is a copy of the original remaining on file in the
 Department of Internal Affairs of Pennsylvania, made con-
 formably to an Act of Assembly approved the 16th day of
 February, 1833, I have hereunto set my Hand and caused
 the Seal of said Department to be affixed at Harrisburg, this

— seventh — day of — July — 1896.

James W. Pitta
 Secretary of Internal Affairs.